



# Tempe Community Action Agency

## **BUILDING RESILIENCE CAPITAL AND PROGRAM EXPANSION CAMPAIGN** *Commemorative Gift Naming Opportunities*

As increased numbers of people struggle with poverty, and as homelessness has risen in our community, TCAA took the bold step to launch a \$17 Million dollar capital and program expansion campaign. Currently, 60% of the funding has been secured and the land has been acquired.

The Campaign will deepen TCAA's impact on food security, housing stability, child and family health and well-being, and economic mobility by expanding programs that serve residents in Tempe and neighboring communities. It will build the agency's first permanent home and provide adults and families with easy access to a full array of programs in one location, including the Economic Mobility programs, market-style Food Pantry, a new 68-bed shelter, and 12 transitional housing units, among others.

Your gift to the Building Resilience Campaign will permanently shape and elevate community conditions.

Naming opportunities are available for both one-time and multi-year gifts.

### **HEALTH, HOUSING & HUMAN SERVICES CENTER** **Gift of \$2,000,000**

Prominent naming opportunity for the main building

### **EMERGENCY SHELTER** **Gift of \$1,000,000**

68 beds for unsheltered adults and seniors



### COMMERCIAL KITCHEN

**Gift of \$750,000**

Supports meal preparation for Meals on Wheels, senior center lunches and shelter participants

### MARKET-STYLE FOOD PANTRY

**Gift of \$750,000**

Creates a choice-based approach for food pantry participants

### TRANSITIONAL HOUSING UNITS

**Gift of \$500,000**

Constructs housing units for 12 adults transitioning between shelter and a permanent home

### COMMUNITY MULTI-PURPOSE ROOM

**Gift of \$500,000**

Builds a large collaborative meeting space for program and community gatherings and serves as the dining room for shelter participants, site staff, volunteers, and visitors

### HOMELESSNESS INTERVENTION HUB

**Gift of \$250,000**

Safe space for case management, housing and resource navigation services, and addressing basic needs among sheltered and unsheltered individuals.

### MISSION ADVANCEMENT SPACE

**Gift of \$250,000**

Supports employees, volunteers, and community partners working together to tackle the root causes of hunger, poverty, and homelessness

### WELCOME CENTER

**Gift of \$250,000**

Provides a hospitable main entrance, welcome center and triage area

### ECONOMIC EMPOWERMENT CENTER

**Gift of \$250,000**

Establishes space to empower low-income families and individuals to become fully self-supportive, pursue the reduction of poverty and revitalize low-income communities.

### TRANSITIONAL HOUSING RECREATION & SOCIALIZATION CENTER

**Gift of \$100,000**

*RESERVED BY THE THUNDERBIRDS*

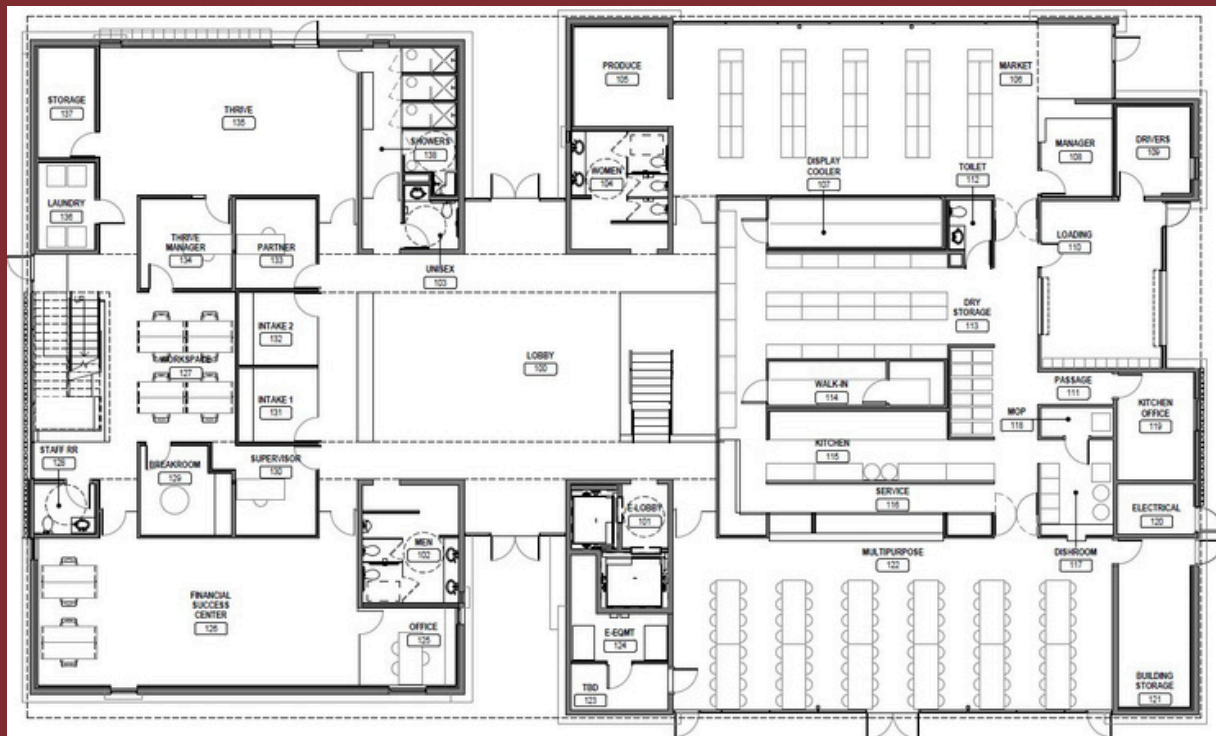
Gives transitional housing participants a gathering area that includes living room, kitchen, and laundry space

### COMMERCIAL MULTI-TEMP CATERING VEHICLE

**Gift of \$100,000**

Transports nutritious, prepared meals from our commercial kitchen to senior center lunch programs

## FIRST FLOOR





**Building Resilience**  
SHELTER · NOURISH · THRIVE

**COLLABORATIVE MEETING SPACE AND BOARD OF DIRECTORS CONFERENCE ROOM**

**Gift of \$30,000**

*RESERVED BY ZITA JOHNSON FAMILY*

**SHELTER BEDS**  
**Gift of \$75,000**

*RESERVED BY MIKE HITT IN HONOR OF DAVE SUMMERS*

Provides a bed, linens, and storage unit for 68 shelter participants

**HYGIENE AMENITIES FOR EMERGENCY SHELTER**  
**Gift of \$50,000**

*RESERVED BY TEMPE FIREFIGHTERS CHARITY*

Supports shelter participants with an area for showers, lockers, and storage

**EMPLOYEE AND VOLUNTEER RESPITE AREA (UPSTAIRS)**

**Gift of \$25,000**

Gives employees and volunteers a relaxing break area for recharging

**EMPLOYEE AND VOLUNTEER RESPITE AREA (DOWNSTAIRS)**

**Gift of \$25,000**

*RESERVED BY PAT NOLAN*

Gives employees and volunteers a relaxing break area for recharging

**COUNSELING/INTAKE OFFICE**  
**Gift of \$15,000**

Allows for collaboration with partner organizations on site with a private counseling/intake office for program enrollment, case management, resource navigation, and services (4 available)

**FURNISH 1 TRANSITIONAL HOUSING UNIT**  
**Gift of \$10,000**

Provides linens, appliances and furnishings for one transitional housing unit (4 available)

**PATIO - NORTH SIDE**  
**Gift of \$10,000**

*RESERVED BY FREDA & THOMAS ROTHERMEL*

Establishes a space for shelter and transitional housing participants to relax and meet with case managers and resource navigators.

**PATIO GARDEN - SOUTH SIDE**  
**Gift of \$10,000**

*RESERVED BY STEPHEN & CORINNE RICKS*

Connects our community garden with the commercial kitchen and food pantry and provides a warm and welcoming community space.

**SECOND FLOOR**



## PROGRAM EXPANSION

### SHELTER MEALS

**Gift of \$250,000**

One year of meals for shelter clients

### MARKET-STYLE FOOD PANTRY

**Gift of \$150,000**

One year of food items

### MEALS ON WHEELS

**Gift of \$150,000**

One year of raw food for hot, nutritious meals daily to Tempe and Scottsdale homebound and aging adults

### ECONOMIC MOBILITY

**Gift of \$25,000**

One year of financial education and workshop instruction for TCAA participants

### SHELTER

**Gift of \$25,000**

Weekly life skills training and therapeutic activities for shelter participants



### COMMUNITY HEALTH SPACE

**Gift of \$50,000**

Renovates part of the current Apache site at 2146 E. Apache Blvd, 1/2 block from the new site to house community health programs

### FAMILY EDUCATION & RESOURCE CENTER

**Gift of \$25,000**

Builds an education and resource center for child play, early childhood development assessments, and classroom for parenting education as well as a private lactation room for mothers located at 2146 E. Apache Blvd, 1/2 block from the new site

### COMMUNITY CLASSROOM

**Gift of \$25,000**

Provides a space for community education, parenting classes and community health related activities at 2146 E. Apache Blvd, 1/2 block from the new site



**Building Resilience**

SHELTER · NOURISH · THRIVE

Interested individuals, corporations, families, foundations and other groups are invited to contact the Development Office for more information.

*Carrie Aranda, Director of Mission Advancement*

[CarrieA@tempeaction.org](mailto:CarrieA@tempeaction.org) | 480.422.8922 Ext. 5893

*Your gift to the Building Resilience Campaign will be publicly acknowledged in accordance with our donor recognition plan unless you request anonymity. Naming privileges are reserved on a first come, first served basis. Upon receipt of your pledge or gift with a naming opportunity request, TCAA will provide a written donor recognition memorandum to capture the recognition and naming details. Both parties will sign the memorandum when its contents are mutually approved.*